



Information when you need it



the **gwydir grower**

30th October 2020

Crop Check – Moree

Estimating about 10,000ha of irrigated cotton at this stage in the Gwydir Valley. This is based on full allocation of Bore Water (44,771 ML, as this includes carryover there may be individual limits to accessing that water and not all available, but would be close) and 5.07% allocation for General Security water, 38,070 ML along with one supplementary event and some water stored on-farm. See the GVIA website for more detailed information on current water availability <https://www.gvia.org.au/the-gwydir-valley/water-available-for-irrigation/current-water-availability/> or the latest water allocation statement is available [here](#)

IMPORTANT REMINDER SUPPLEMENTARY EVENTS: water users need to complete the Water NSW EOI to be interested in any supplementary events this season
https://www.watarnsw.com.au/data/assets/pdf_file/0004/161437/Northern-Valleys-EOI-Reminder-28-Oct-2020.pdf

Recent rainfall has allowed for a small flow to provide stock and domestic and replenishment needs for most effluent systems, any flows above this now can then be made available for sharing as per the rules.

Copeton Dam is 16.3%, currently holding about 238 GL. This time last year the storage was at 8.5%. <https://www.watarnsw.com.au/supply/regional-nsw/availability>

CROP STAGE –

- The majority of the irrigated cotton has been planted and watered up in the Gwydir Valley.
- Earliest plant that I'm aware of is 30th September 2020.
- Recent storm activity and hail has impacted a number of fields to varying degrees. Some replant required on some dryland fields South Moree. Haven't heard of any replant in irrigated to date.
- Water up take between 1.7 and 2.1 ML/ha
- 2 reports of Sicot 606B3F being slower to emerge compared to Sicot 746B3F and Sicot 748B3F, with a thinner stand evident.
- Dryland planting has commenced south of Moree in the Gurley and Bellata districts.



Nice stand at "Caroale". Sicot 748B3F Planted 11th October 2020.

INSECTS/BENEFICIALS -

- Seeing thrips in wheat and Cotton Flea Beetle in sorghum
- Mirid adults particularly next to Sorghum.
- Adama will have plenty of mirid traps about this year
<https://www.adama.com/australia/en/microsite/agtech/trapview/green-mirid>, see what Casey Onus has to say about the traps at
<https://www.youtube.com/watch?v=dS-z2P4sog&feature=youtu.be>

WEEDS -

- No comments this week

DISEASE -

- Symphyla evident in some fields
- No Alternaria yet but do expect some seedling incidence in the next 2 weeks.
- Root disease low thus far but wet weather and some cooler temps not ideal, especially for crops just watered up.

What the consultants are saying.....

"90% of irrigated cotton planted and generally, crops are looking pretty good. Fields that go watered up then followed by rainfall not as good as those crops that have had a clear run. No replants though".

"Biggest concern, not enough water".

“Seeing some damage to root from symphytan, which has a significant effect on seedling vitality”.
“My planned dryland cotton program 50% in. 400ha double skip so far, rest after it dries out”.
“All my cotton was only planted and watered up about 10 days ago, so only just coming up, germination looks good so far. All solid plant. No insect or disease issues as yet”.
“30% planted, from 30 Sept to 20 Oct. Germination and establishment ok although some will need rain. Most 40” fully irrig, some will be 60” semi irrig depending upon the weather. Dryland Cotton is 2.4m & 60 inch “.
“Triplus seed treatment looks very good, cotyledons are healthy”.
“Early insect presence are: CFB, Mirid adults particularly next to Sorghum”.
“Of the fully irrigated crop, 100% in. Of the semi irrigated crop maybe 30%. Single skip and 60 inch”.
“Earliest plant Oct 6 through to Oct 23, so far establishment good but only cotyledon to first true leaf emerging”.

Crop Check – Mungindi

CROP STAGE –

- Looking at 4500 Ha irrigated cotton in the Mungindi/Boomi/Talwood district.
- Around 35% of the irrigated cotton planted in the Mungindi district
- Started planting 7th October
- Mix of solid fully irrigated and single and 60” semi irrigated.
- Storm rains and hail has unfortunately affected some cotton and winter crops.

INSECTS/BENEFICIALS -

- Very low insect pressure in cotton, but keeping an eye out for insects moving in from cereal crops
- ADAMA Mirid traps will be installed, covering most of the cotton area
<https://www.adama.com/australia/en/microsite/agtech/trapview/green-mirid>

WEEDS -

- No comments

DISEASE -

- Cotton only just emerging, nothing evident to date, but cooler, wet weather of concern.

What the consultants are saying.....

“Low thrip population moving from cereal crops”

“Cotton only just emerging, recent storms and wet weather is definitely a concern, after the storms this week, hopefully there will be no further hail”.

“Over 90% of our cotton area will be 1m solid configuration and fully irrigated. Planning to water up all fields (depending on rainfall). Remaining 10% will be split between semi-irrigated and single skip”.

“We will have some fully irrigated 60” fields some semi irrigated cotton with 2 or 3 irrigations”

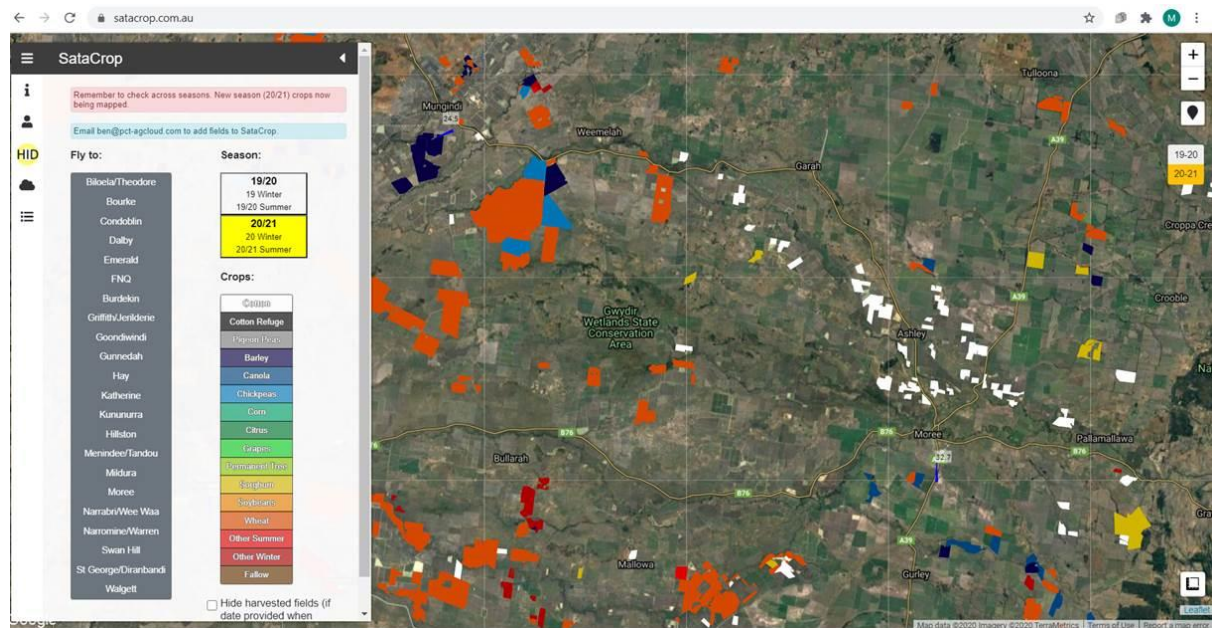
“While we definitely want to see the winter crops harvested first, it would be great to see significant rain in the catchment to increase cotton area”.

Reminder – Please mark your sensitive crops on SATACROP

<https://satacrop.com.au/>

Please make sure your crops get listed on the SataCrop website! It is so important this map gets completed so ALL susceptible crops are marked out easily for spray applicators and farmers to see. To gain access to the SataCrop website for editing purposes, you will need to email Ben Boughton at PCT-agcloud on ben@pct-agcloud.com

A short video to show you how to use Satacrop and add your fields is available at: [SataCrop Video- How to add a field.](#)



With summer spraying starting around the region including fallow and winter crop desiccation sprays, it's a timely reminder to be vigilant when spraying this season. Please see attached poster regarding spray drift awareness and always refer to [SataCrop](#) for location of sensitive crops.

Cotton Pest Management Course

Are there any bug checkers (or anyone) needing to brush up on:

- cotton physiology and pest management
- best-practice methods of pest identification
- emergency disease and plant pest response
- pest control techniques?

Total's Cotton Pest Management training may be of interest to you. More information here <https://www.tocal.nsw.edu.au/courses/short-courses/agskilled/cotton-pest-management>

CSD E&D Update, Gwydir & Mungindi, Stuart McFadyen

Irrigated variety trials this year in the Gwydir valley are at 'Red Mill', 'Glen Prairie', 'Morcott' and 'Cudgildool'. The first were watered up on the 12-10-20 and our latest will be planted next week. This will give us about a three week spread for planting dates. Dryland variety trials are due to be planted this week at 'Macquarie' and next week at a property near Delungra. Which I am very interested in to see how the varieties perform in the slightly different conditions. The irrigated variety trails include the new variety Sicot 606B3F for evaluation.

In total I'll have 4 irrigated variety trials, 2 dryland variety trials and 12 Ambassador sites (irrigated, semi irrigated and dryland, 60" and single-skip). CSD also has a verticillium management trial in the Gwydir.



Planting at "Morcott" CSD Bollgard 3 Flex Variety Trial and Ambassador field 6th October 2020.



Watering up the "Glen Prairie" CSD Bollgard 3 Flex Variety Trial and Ambassador field 17th October 2020

A summary of the 2019/20 Ambassador Network Program: Key Learning and Season Summary is provided on the CSD website [here](#) (you will need to be a [CSD member](#) to access the report). With six seasons of data collected through the Program, the CSD Ambassador Network has enabled comparisons to be made across different districts, climatic conditions and management types. Additionally, the data set can be broken into yield performance to compare the similar characteristics of high yielding crops.

The [CSD website](#) has had a major upgrade over the last few months, members can access more detailed information than ever before.

The [cotton field weather network](#) and [Day Degree calculator](#) (DDC) is available at any time for real time data. Additionally the DDC has a handy 'seasonal comparison' tab which indicates this season progress versus the previous, and a download function to allow an excel download of daily min, max, DD accumulation, rainfall, radiation and longer term means for greater convenience.

CSD Day Degree Calculator output for a crop planted on 15th October 2020, Moree

Summary
Seasonal comparison

DD Base 12


147.0

DD 1532*

89.3

* Experimental Day Degree 1532 - this formula is the basis of new work carried out by CSIRO and the United States Department of Agriculture (supported by the Cotton Research and Development Corporation).

Cold shock days ($\leq 11^{\circ}\text{C}$)	Days above 36°C
3	0
Nights above 25°C	Days above 40°C
0	0
Total rainfall (mm)	Total radiation (MJ/m^2)
49.2	274.9
Average temperature ($^{\circ}\text{C}$)	
21.6	



Search Moree Aero again

Start date

End date

Search Moree Aero again

Accumulated day degree 'targets' after seed imbibed

Cotton development	DD Base 12** (Industry standard)	Experimental DD 1532
Emergence	80	TBA
First square	505*	339
First flower	777*	584
First open boll	1527*	1077

* Please note that DD Base 12 targets to first square, first flower and first open boll will increase by 5.0 DD for EACH cold shock event - please adjust your target accordingly.
Targets relate to specific developmental events.

** Source: Australian Cotton Production Manual 2019 (page 6).

Read this [Facts on Friday](#) article to find out more about CSD's Day Degree Calculator.

Date range: 15 October, 2020 to 29 October, 2020 (15 days).

Summary Seasonal comparison

	2020	2019	2018	2017	2016	10 year mean
Base 12	147.0	181.3 ▲	174.7 ▲	149.8 ▲	122.5 ▼	158.2 ▲
DD1532*	89.3	114.3 ▲	115.3 ▲	90.5 ▲	55.2 ▼	94.0 ▲
Cold shock days ($\leq 11^{\circ}\text{C}$)	3	2 ▼	1 ▼	1 ▼	8 ▲	3.0
Days above 36°C	0	2 ▲	0	0	0	0.6 ▲
Nights above 25°C	0	0	0	0	0	0.0
Days above 40°C	0	0	0	0	0	0.2 ▲
Total rainfall (mm)	49.2	0.0 ▼	24.4 ▼	10.8 ▼	39.6 ▼	20.3 ▼
Total radiation (MJ/m ²)	274.9	367.5 ▲	334.4 ▲	303.5 ▲	348.1 ▲	315.4 ▲
Average temperature (°C)	21.6	23.8 ▲	23.6 ▲	21.9 ▲	18.9 ▼	22.1 ▲

* Experimental calculation.

General guide only; not comprehensive or specific technical advice. Circumstances vary from farm to farm. To the fullest extent permitted by law, CSD expressly disclaims all liability for any loss or damage arising from reliance upon any information, statement or opinion on this website or from any errors or omissions on this website.

Climate observations and data are obtained via the State of Queensland SILD patched point dataset.

For further information on the Day Degree Calculator see: Facts on Friday: [A new Day Degree Calculator to assist in crop management](#)



A new Cotton Population App has also recently been released. The app works by the user scanning a row of cotton, or manually entering row counts to calculate average plant population.

Cotton POP is free, and available now from the [App Store](#). For further details, including a how-to-use guide visit: www.faststartcotton.com.au/cotton-pop

Reminder: [FastStart Cotton Establishment Awards](#). Easy to enter and has a ripper of a travel prize on offer, check out what you need to know at <http://faststartcotton.com.au/faststart-awards/>

[Are you a member of CSD?](#)

Access to the latest CSD trial information, research, apps and calculators on the CSD website has changed. Exclusive CSD member-only content is available via a membership portal on the CSD website. Only CSD members will be able to access the much of the information and resources which were previously freely available online.

What you need to know:

Membership cost: \$20/yr

How do I sign up? <http://www.csd.net.au/membership>

What if my contact details have changed? You can update your contact details here <http://www.csd.net.au/membership>

Running On-Farm Trials

Conducting on-farm trials can be a good way to confirm or dispel theories drawn from observations or demonstration tests where a product or technique is tried “on top of” normal grower practice. However, outcomes from these are often disputed or marred by a range of factors, beyond the treatment, that are considered to influence the result or outcome. To help growers gain more value from conducting on-farm trials, the CottonInfo team have put together some [tips for conducting trials](#).

These are summarised below:

- Keep the question simple
- Aim for only one or two possible outcomes
- Have a nil treatment (control strip)
- Replicate treatments
- Randomise treatments
- Conduct on a consistent and uniform site
- Mark or geolocate treatments
- Ensure you can measure the result

For more detail and links to further information on conducting trials, click [here](#).

Have your say – Regional Wellbeing Survey

The Regional Wellbeing Survey aims to understand how the wellbeing of people living in rural, regional and urban areas of Australia is changing, and the things that are affecting quality of life (in good and bad ways) in different communities. With 2020 being such a challenging year, it’s more important than ever for the University of Canberra research team to get responses from all over Australia, to help them produce data to help support communities and groups impacted in different ways by the events of 2020.

If you haven’t already taken part in the survey, you can complete the survey by going to www.regionalwellbeing.org.au and clicking the link at the top of the page, or go directly to the online survey at https://canberrahealth.az1.qualtrics.com/jfe/form/SV_81FrT1PNwhLUwwl

Don’t miss out on this great opportunity to contribute to the University of Canberra’s regional wellbeing research.

Regards
Janelle

Janelle Montgomery

Regional Extension Officer | Gwydir, Mungindi | CottonInfo
M 0428 640 990 | E janelle.montgomery@cottoninfo.net.au | W www.cottoninfo.com.au



NOTICE: This email and any attachments are confidential to Cotton Seed Distributors Ltd. If you are not the intended recipient, you are not authorised to use or disclose this email or the attachments or any information in them; please tell the sender immediately by return email that you have received the email in error, and delete the email and its attachments from your computer.

To **Unsubscribe** to the Gwydir Grower, please email janelle.montgomery@cottoninfo.net.au