



the cotton thread

Border Rivers, St George and Dirranbandi

October 2020



Fall Armyworm was detected in crops near St George recently. Photos show some of the key features used to identify FAW.

Seasonal Outlook Positive

The recent edition of the [CottonInfo Moisture Monitor](#) continues to indicate a positive outlook for rain in the cotton production areas over the coming months (just waiting for it to happen!!)



Source	Temp Forecast	Precipitation outlook				
		Emerald	Sth Q'ld	N-NSW	C-NSW	S-NSW
ACCESS-S	Cooler	Above normal Nov/Dec/Jan	Above normal Nov/Dec/Jan	Above normal Nov/Dec/Jan	Above normal Nov/Dec/Jan	Above normal Nov/Dec/Jan
UK Met	Cooler	Above normal Nov/Dec/Jan	Above normal Nov/Dec/Jan	Above normal Nov/Dec/Jan	Above normal Nov/Dec/Jan	Above normal Nov/Dec/Jan
IRL NMME	Cooler	Above normal Nov/Dec/Jan	Above normal Nov/Dec/Jan	Normal	Above normal Nov/Dec/Jan	Above normal Nov/Dec/Jan
ECMWF	Cooler	Above normal Nov/Dec/Jan	Above normal Nov/Dec/Jan	Above normal Nov/Dec/Jan	Above normal Nov/Dec/Jan	Above normal Nov/Dec/Jan
CMCC	Normal	Normal	Normal	Normal	Normal	Above normal Nov/Dec/Jan
JMA	Cooler	Above normal Nov/Dec/Jan	Above normal Nov/Dec/Jan	Above normal Nov/Dec/Jan	Above normal Nov/Dec/Jan	Above normal Nov/Dec/Jan

MacIntyre growers have commenced planting however water allocation remains low with Pindari Dam just below 16% and Glenlyon at 15%. Pindari has registered some rainfall and inflows that are “slowing the fall” but more significant events are required to turn this



around. Beardmore Dam at St George is hovering around 50% with a slight increase over recent days from some upstream inflows.

Rainfall has been mixed with falls up to 35mm in the St George and Goondiwindi regions over the past week but as with typical thunderstorm activity, this is highly variable, with a bit of hail thrown in to rub salt into wounds of those trying to harvest crops. St George crops have had a mixed experience with the rain (and hail) causing some emergence issues and seedling damage.

Fall Armyworm detected locally

Earlier in October the presence of Fall Armyworm (FAW) was confirmed near St George.

Queensland Department of Agriculture and Fisheries Entomologist and CottonInfo IPM Technical lead, Paul Grundy, has provided the following update:

“With fall armyworm (FAW) detections throughout Queensland and well into NSW, many agronomists are taking a closer look at the caterpillars they come across in different crops.

Importantly, please note that FAW have not been detected in in any cotton crops (either Bollgard® 3 or unsprayed non-Bt cotton refuges) grown over the last 7 months in Northern Australia. Host preference field studies conducted by Dr Brian Thistleton and his team at the Department of Primary Industries and Resources in the NT also found no evidence for FAW moth laying eggs in in field grown cotton plots, however their study did show that FAW could feed and develop on conventional cotton when confined within containers in the lab without alternate host choices.

The incursion of FAW in Australia is still very new and therefore it is too early to definitively rule particular scenarios in and out. However, at this stage field observations and studies suggest that cotton is not a preferred host for egg laying FAW moths. Given that >90 per cent of the crop grown is Bollgard® 3, people are unlikely to encounter this pest on cotton during the coming season. **For cotton crop managers the clear message is be alert not alarmed.**

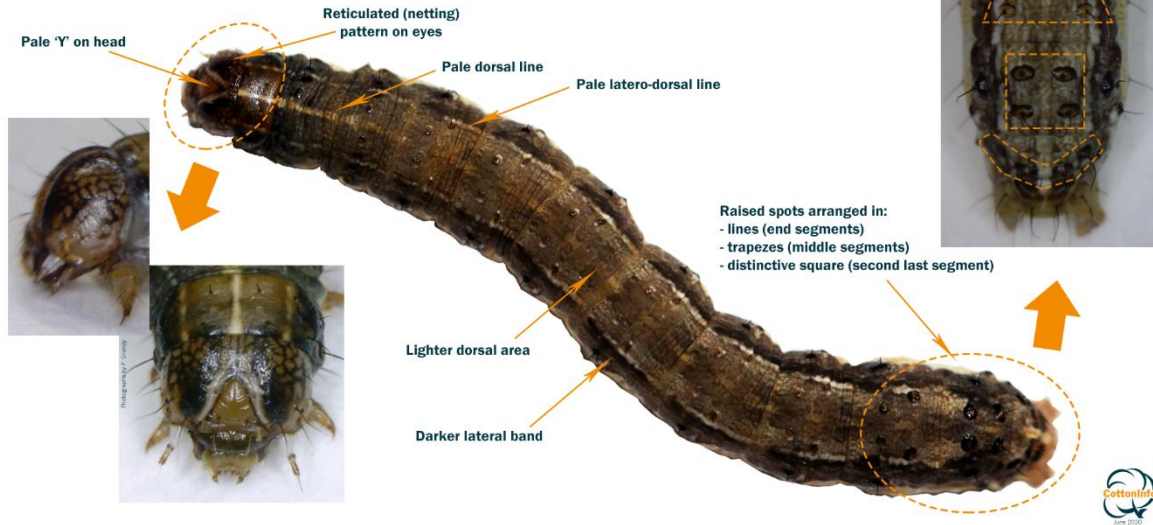
If you find or suspect that larvae of this pest are present in your cotton fields (on either Bollgard or non-Bt cotton refuges) please notify your local [CottonInfo REO](#) or the industry’s IPM Technical Lead ([Paul Grundy](#)) so that steps can be taken to verify an identification. This is important as many researchers are currently trying to understand the pest status and host range for FAW. Fall armyworm can be very difficult to distinguish from *Helicoverpa* spp. when they are small (<15mm) in size, becoming easier to identify as they become larger. Some of the key characteristics are depicted on the larval image below and this [YouTube video](#).”

Further Information:

The [Beatsheet](#) and [GRDC](#) websites host a good range of information and links to other resources for those seeking more information. The Beatsheet also hosts [FAW trap count information](#) on their website for a range of locations.

GRDC are hosting a **webinar update on FAW on November 12th at 9am** (AEST). Melina Miles from QDAF and Brent Wilson from Nutrien Ag Solutions will make presentations. To register for the webinar, click [here](#).

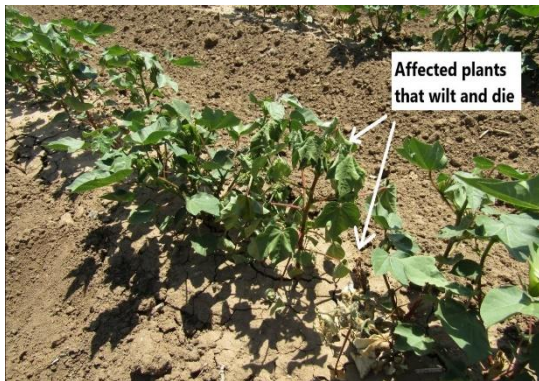
Fall armyworm (*Spodoptera frugiperda*)



Reoccurring wilt: Be alert

Growers and consultants are asked to be alert for plants with symptoms of the potentially new disease reoccurring wilt.

The [CottonInfo Fact sheet on Wilt diseases](#) has been updated to provide information on this new disease.



Have you seen fields with the following symptoms?

- The odd plant or patches of plants that wilted and suddenly died with dead leaves usually remaining on the plant.
- Reoccurring patches of dying plants getting larger over past seasons with no explanation for plant death i.e. seasonal conditions.

- Dying plants can be amongst healthy plants.
- Bronzing of leaves and petioles.
- Reddening of the roots and root decay i.e. if plants are pulled out of the soil, the taproot snaps due to root decay.
- May see reddening of the vascular tissue.
- Stem canker/lesions may be present.

Keep an eye out for these symptoms this coming season. If you have concerns or plants expressing symptoms, contact your state pathologist:

QLD DAF: Dr Linda Smith 0457 547 617
NSW DPI: Dr Duy Le 0439 941 542

- Monitor soil moisture conditions – use a shovel!!!
- Irrigate at around 50% available water **WITHIN THE ROOT ZONE**
- Check weather forecasts near time of irrigation
- Irrigate at time of hot spell if soil moisture looks limiting
- Don't over irrigate

The newsletter contains further detail and links to a range of other resources including the below Mike Bange Video on the topic (press Ctrl + Click on picture).



CottonInfo Blog

[Communicate Your Biosecurity Requirements](#)

If it can move, it can carry pests, weeds and diseases. For this reason, it is important to communicate your biosecurity requirements to all people entering farms. Never assume people know the biosecurity measures you have in place for your farm.

See suggested methods for communicating your biosecurity requirements to people.

First Irrigation

Timing of first irrigation is critical to setting up a plant structure capable of supporting early fruiting growth. A recent CottonInfo e-newsletter "[Timing your First Irrigation](#)" focused on this aspect of crop management.

Key points made included:

Late Plant/Re-plant Considerations

The CSD [Facts On Friday publication from October 27](#) covered considerations for late plant or replant cotton crops.

The [replant calculator](#) assists growers in determining the potential of the current crop versus the potential of a replanted crop.

The Facts on Friday document provides crop management targets for late plant cotton along with the reasoning for those targets. It also discusses important considerations such as variety choice, potential pest and disease issues and challenges in maturing the crop for harvest.

Access to the above replant calculator and publication is restricted to CSD members.

CSD Update October 2020

- New roles available at CSD to support the organisation's 5-year plan.
- FastStart Cotton POP app available – the app helps count cotton plant stands utilising the camera on an Ipad or Iphone. The app is available for free from the Appstore.

Numerous FactSheets and Publications were released by CSD during October and CSD members can find these under the [Resources tab on the website.](#)

Topics covered include:

- Late Planting options (Factsheet)
- Setting the crop up early-season (factsheet)
- 2019-20 CSD Ambassador Network program (newsletter and report)
- Cotton POP app (factsheet and newsletter)
- CSD Variety Trial Shield winners (newsletter and case studies)

CRDC news

News from CRDC includes:

- International Rural Womens day was celebrated during October.
- The [regional Wellbeing Survey](#) underway.
- CRDC and Cotton Australia are supporting a partnership between iconic Australian brands Country Road and Landcare Australia to improve

biodiversity on cotton farms in the Namoi Valley of NSW.

- Applications open for 2021 Future Cotton Leaders program
- World Cotton day celebrated during October.
- CRDC director appointments announced.

For more details on these, click [here.](#)

COTTON AUSTRALIA CORNER

Cotton Matters – key points

- 2020 Regional Wellbeing Survey is in progress and growers are encouraged to participate. A link to the survey can be found [here.](#)
- Changes to China export conditions for Australian cotton.
- Queensland election: labor water pricing promise welcomed.
- Apply now for Future Cotton Leaders program
- Cotton Australia presents at Sustainability claims webinar
- Growers encouraged to map fields on Satacrop to aid in spray drift reduction this season.
- Qld growers: sign up now for online training. [Webinar series](#) on modern farming technologies on dates 5, 12 and 19 November.
- Program available for employee assistance.
- For further information click [here.](#)

What's On:

12th November:

- 9am GRDC FAW update webinar
- AgNVet St George grower afternoon

13th November:

- Planter speed trial field walk, St George.

Andrew McKay

Regional Extension Officer - Border Rivers, St George & Dirranbandi | CottonInfo

M 0407 992 495 | **E**

andrew.mckay@cottoninfo.net.au | **W**

www.cottoninfo.com.au

Disclaimer:

The contents of this newsletter are a general guide only, not comprehensive or specific technical advice.

Circumstances vary from farm to farm. To the fullest extent permitted by law, CSD expressly disclaims all liability for any loss or damage arising from reliance upon any information, statement or opinion in this presentation or from any errors or omissions in this document.